

PICK & CARRY CRANE

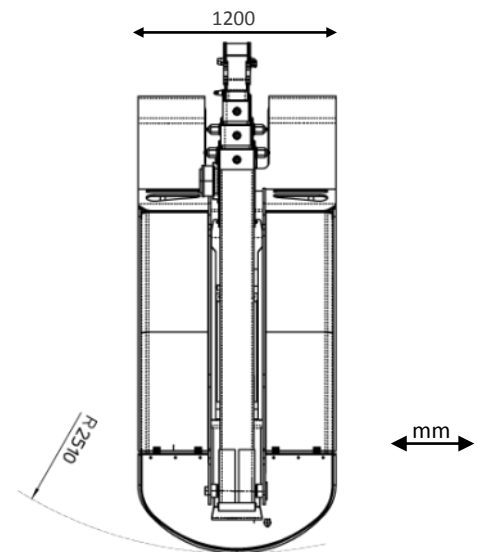
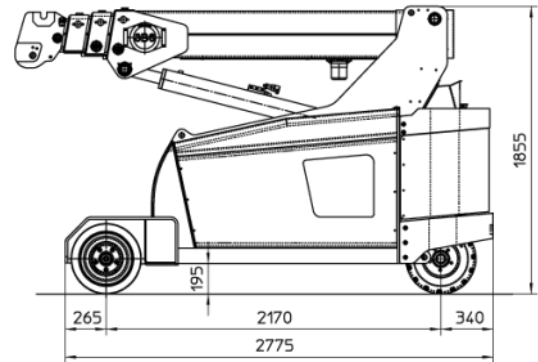
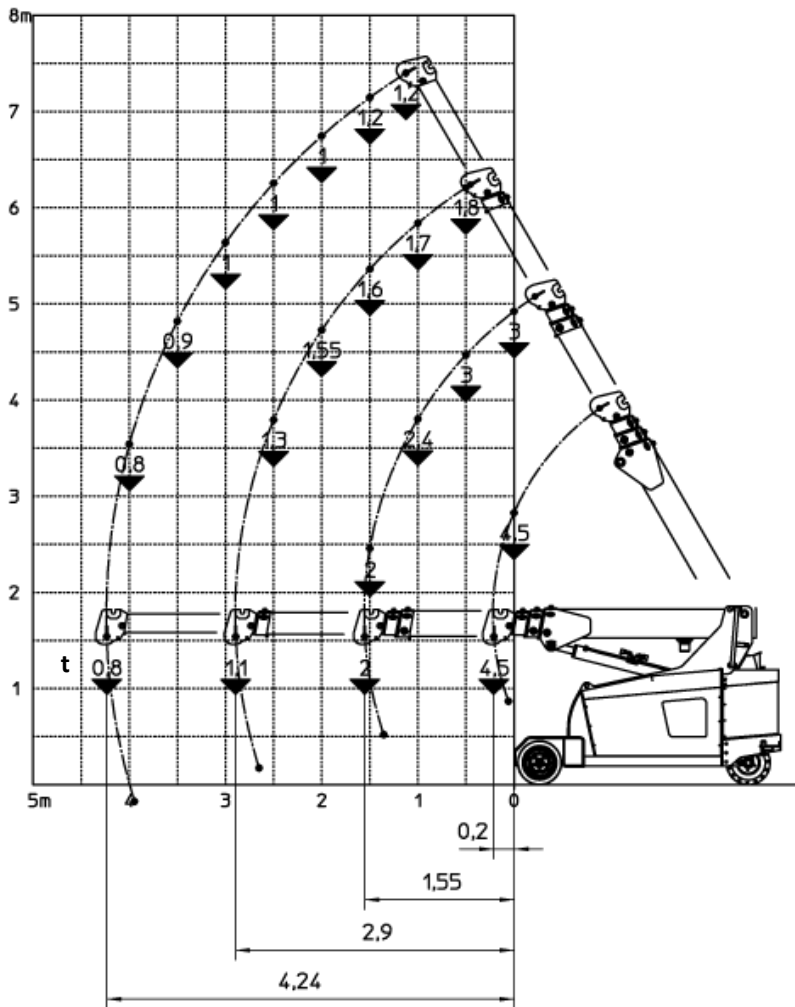


MC 40S - Max capacity 4,5 t



Electric by battery

MC 40S



MODEL	MC 40S
CRANE CLASSIFICATION ACCORDING TO UNI ISO 4301-1	A3
REFERENCE STANDARDS	2006/42 CE - 2004/108 CE I.S.P.E.S.L. DIN 15018 (1,3) - 15019 (1) Class H2 B3 ANSI B30.5 - 2007 and subsequent modifications
TRACTION	Electric
BOOM ACTIVATION	Hydraulic
POWER TYPE	Electric battery
MAX. CAPACITY (kg)	4500
TOTAL WEIGHT (kg)	4800
BOOM ANGLE TOPSIDE (°)	60
BOOM ANGLE DOWNSIDE (°)	-15

FRAME: JMG designed and manufactured, box type, torsion resistant design of high strength structural steel.

BOOM: Made of moulded and welded quality steel plate, comprised of a base unit and 3 telescopic elements.

TRACTION MOTOR: Electric motor 5 kW 48 V AC, insulation class H.

MOTOR PUMP: Electric motor 9 kW 48 V AC, insulation class H.

BATTERY: 48 V 560 Ah.

POWER DRIVE: Electronic speed control, MOSFET type.

HYDRAULIC SYSTEM: Powered by a silenced gear pump. Actuators controlled by electro-proportional distributor.

WHEELS: Front: 4 superelastic 18x7x8" - Rear: 1 superelastic 200/50-10"

BRAKING: Automatic on all wheels (front and rear).

STEERING: Steering on the rear wheels by electric motor. Max. steering angle $\pm 90^\circ$.

TRAVEL CONTROL: Operated by radio remote console.

SAFETY DEVICES: Electronic load moment indicator.

OPTIONAL EQUIPMENT (at extra charge): Hydraulic winch - Jib - Non-marking wheels - Man basket - Hydraulic chain hoist