

# MHT Evolution

THE HIGH CAPACITY HANDLING Solution



## TECHNICAL DATA

**NEW**  
**SAIE 2011**  
INTERNATIONAL BUILDING EXHIBITION



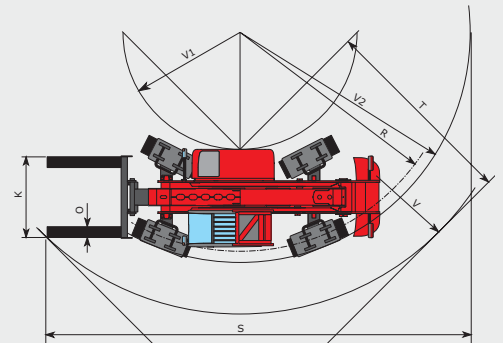
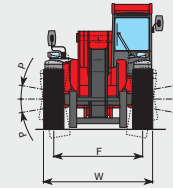
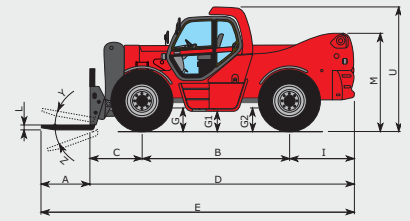
MHT 10225



MHT 10180

# MHT Evolution

	MHT 10180	MHT10225	
	<b>Lifting capacity</b>		
	CDG 600 mm	18000 kg	-
	CDG 900 mm	-	22500 kg
	CDG 1200 mm	14000 kg	18500 kg
	<b>Lifting height</b>	9.7 m	
	<b>Time: laden/unladen (in s)</b>		
	Raise	25.00	32.00
	Lower	17.00	18.50
	Deploy telescope	14.00	
Retract telescope	11.00		
	<b>Tyres</b>	445/95 R25 XLB	23,5 R25 XLB ou 18 R25 XZM2
	<b>Forks (mm)</b>		
Length x width x thickness	1500 x 200 x 80	1800 x 250 x 100	
	<b>Braking</b>	multiple-disc brakes hydraulically assisted on front and rear axles	
	Service brake	multiple-disc brakes hydraulically assisted on front and rear axles	
	Parking brake	negative	
	<b>MERCEDES MTU Engine</b>	OM 904	
	Capacity	4 cyl. - 4250 cm <sup>3</sup>	
	Power at 2200 rpm (ISO/TR 14396)	175 HP/129 kW	
	Max. torque at 1200 rpm - 1600 rpm	675 Nm	
	Injection	direct	
	Cooling	water	
	<b>Transmission</b>	hydrostatic with automatic power regulation (hydraulic variable displacement pump and motor)	
	Reversing shift	electromagnetic	
	Number of gears (forward/reverse)	2/2	
	Max. travel speed	25 km/h	
	<b>Rear axle</b>	OMCI Heavy Duty (type stacker)	
	Frame levelling	10°/10°	5°/5°
	<b>Steering mode</b>	4 wheel steer / 4 wheel drive 3 steering mode	
	<b>Hydraulics</b>		
	Pump (Piston Load Sensing)	170 l/min - 350 bar	
	<b>Control</b>	joysticks JSM (Joystick Switch and Move)	
	<b>Capacities</b>		
	Cooling system	16 l	
	Engine oil	16 l	
	Hydraulic oil	200 l	
	Fuel tank	200 l	
	<b>Unladen weight (with forks)</b>	24080 kg	29800 kg
	<b>Width overall</b>	2.50 m	2.66 m
	<b>Height overall</b>	2.93 m	2.96 m
	<b>Length (forks carriage)</b>	6.60 m	6.86 m
	<b>Ground clearance</b>	0.45 m	0.47 m
	<b>Drawbar pull</b>	15500 daN	17400 daN

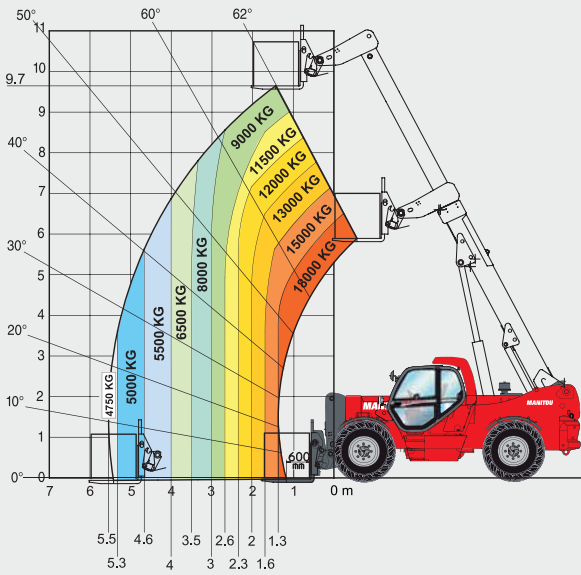


mm	MHT 10180	MHT 10225
A	1500	1800
B	3650	
C	1335	1350
D	6605	6860
E	8105	8660
F	2070	
G	685	510
G1	445	470
G2	685	510
I	1620	1860
K	1750	2000
L	80	100
M	2300	2325
O	200	250
P	10°	4°
R	5445	5750
S	10345	12030
T	4255	5040
U	2935	2960
V	6810	7280
V1	2870	3160
V2	5685	6050
W	2500	2660
Y	12°	
Z	105°	

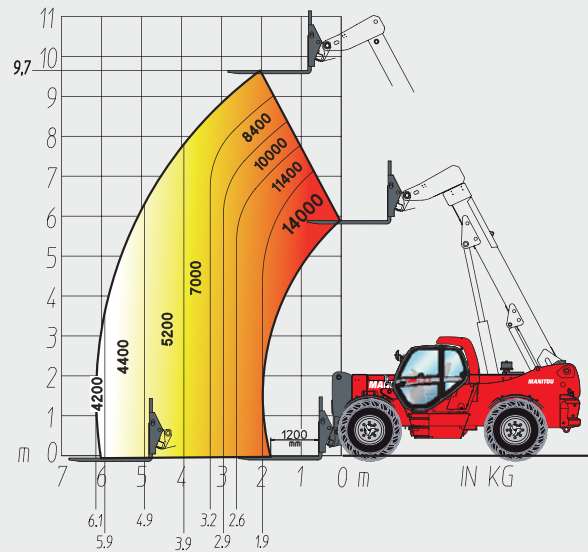
# ROUGH TERRAIN LOAD CHART (UNDER EN 1459 ANNEXE B)

## MHT 10180

CDG 600 MM

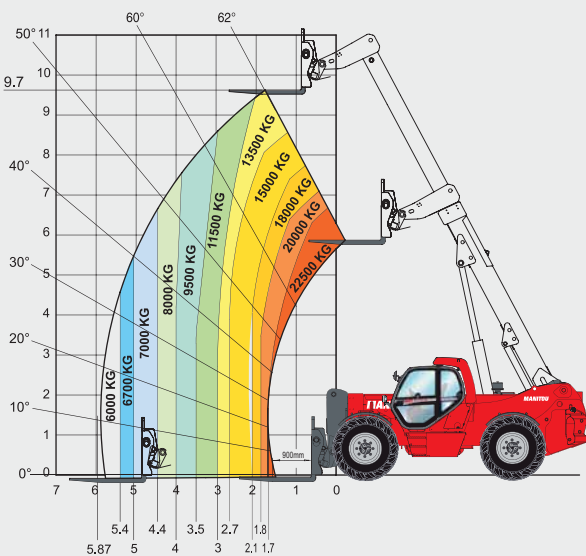


CDG 1200 MM

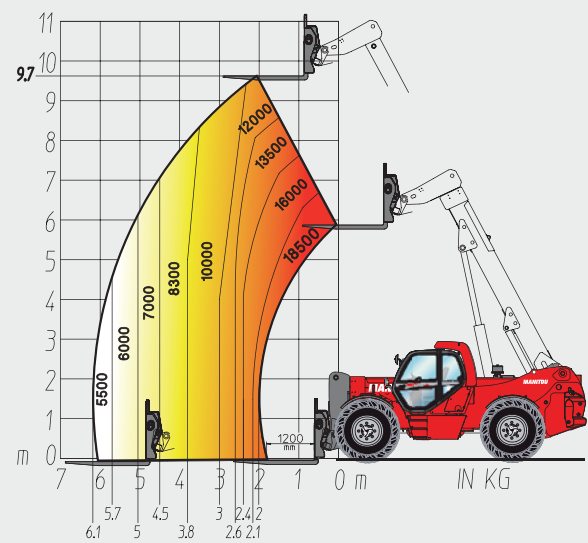


## MHT 10225

CDG 900 MM



CDG 1200 MM



Abroad choice of attachment suitable for industry, construction and mining market's is available : cylinder clamps, hook, tyres clamp, bucket, jib, platforms...