

ARTICULATED BOOM LIFTS

DIESEL POWERED

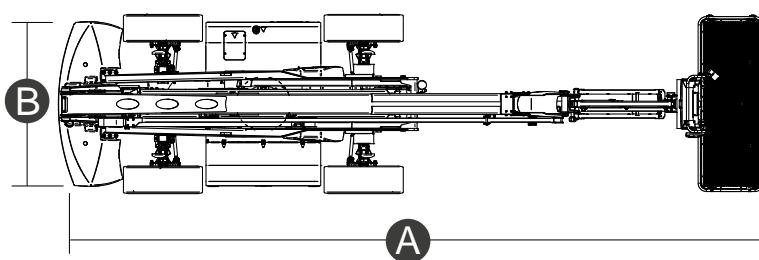
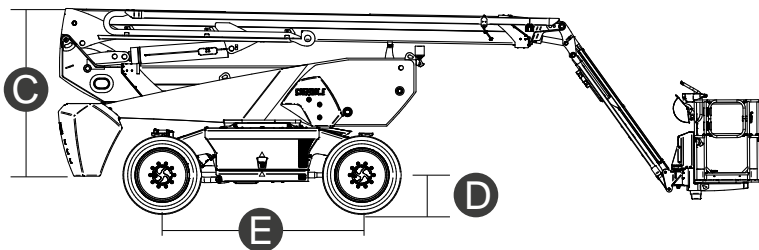
TECHNICAL DATA

| | DAB24RT | DAB28RT |
|------------------------------|------------------|------------------|
| Max. working height | 24.30 m | 28.10 m |
| Max. basket height | 22.30 m | 26.10 m |
| Articulation point | 9.14 m | 9.14 m |
| Max. reach | 17.10 m | 19.40 m |
| Below-ground height | 4.00 m | 6.60 m |
| Below-ground reach | 11.10 m | 14.20 m |
| Max. platform load capacity | 300 kg | 250 kg |
| Max. gradeability (stowed) | 45% | 45% |
| Max. working slope | X -5° / Y -5° | X -5° / Y -5° |
| Max. wind speed | 12.5 m/s | 12.5 m/s |
| Platform length (A) | 9.83 m | 11.83 m |
| Platform width (tyres) (B) | 2.50 m | 2.50 m |
| Platform height (C) | 2.89 m | 2.89 m |
| Platform length (stowed) | - | - |
| Wheelbase (E) | 2.80 m | 2.80 m |
| Tailswing | 1.61 m | 1.61 m |
| Ground clearance (D) | 0.43 m | 0.43 m |
| Turning radius (outside) | 3.74 m | 3.74 m |
| Turning radius (inside) | 0.98 m | 0.98 m |
| Turret rotation (continuous) | 360° | 360° |
| Boom vertical rotation | 112° (+72°/-40°) | 112° (+72°/-40°) |
| Jib type | Regular | Regular |
| Jib length | 2.60 m | 2.60 m |
| Jib vertical rotation | 135° (-54°/+81°) | 135° (-54°/+81°) |
| Basket width | 0.90 m | 0.90 m |
| Basket length | 2.44 m | 2.44 m |



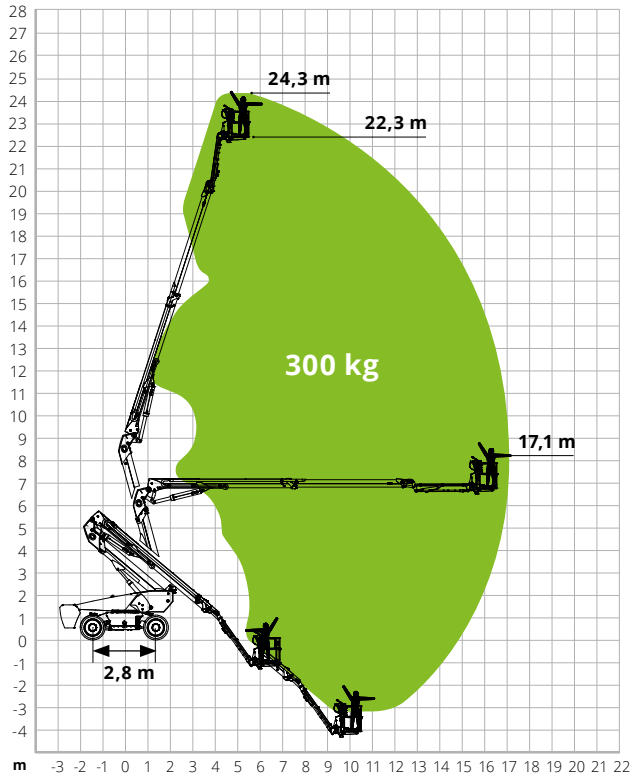
| | DAB24RT | DAB28RT |
|--------------------------------|------------------------|------------------------|
| Basket rotation | 180° (+/-90°) | 180° (+/-90°) |
| Total weight | 17,200 kg | 18,400 kg |
| Travel speed (closed config.) | 6 km/h | 6 km/h |
| Travel speed (working config.) | 1.1 km/h | 1.1 km/h |
| Tyres (foam filled) | 385/45-28 | 385/45-28 |
| Engine | Deutz TD2.9 L4 55.4 kW | Deutz TD2.9 L4 55.4 kW |
| Diesel tank capacity | 135 l | 135 l |
| Hydraulic tank capacity | 165 l | 165 l |
| Electrical system | 12 V DC | 12 V DC |
| Transmission | Hydrostatic | Hydrostatic |

STANDARDS COMPLIANCE: EN 280

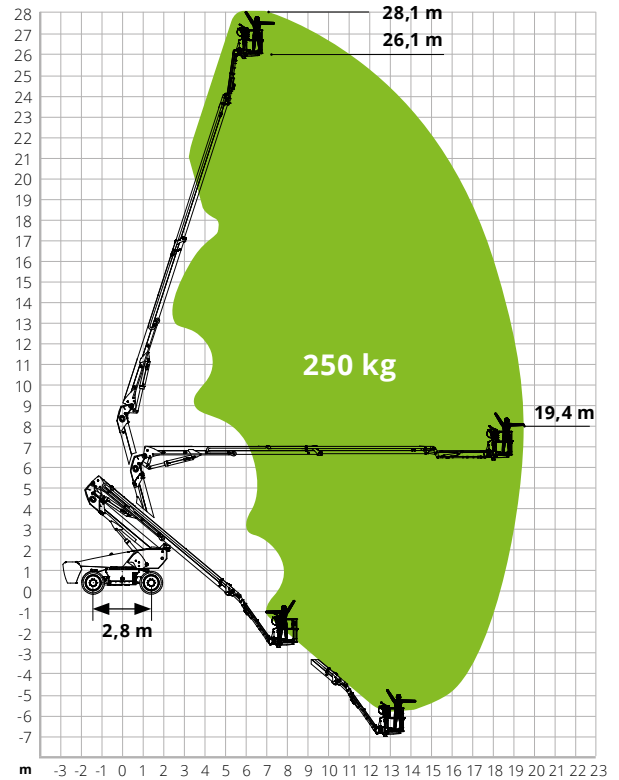


Articulated boom lift load diagrams

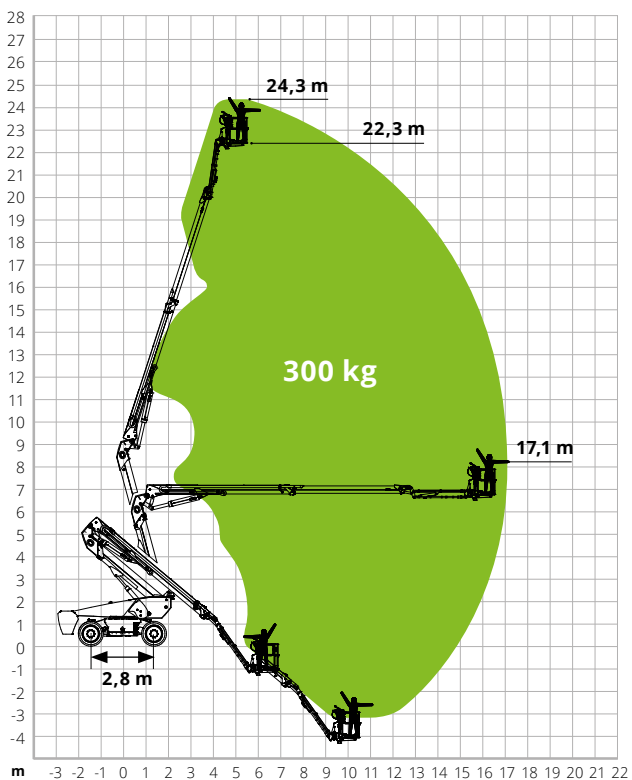
DAB24RT



DAB28RT



EAB24RT



EAB28RT

